

STATE OF PHILANTHROPY IN KENYA

2023 REPORT LAUNCH



Executive Summary

IN COLLABORATION WITH



The image features a solid orange background. On the left side, there is a complex geometric graphic composed of several white lines. These lines intersect to form a central triangular shape that is mirrored across a vertical axis. The lines extend from the edges of the frame towards the center, creating a sense of depth and movement.

Executive Summary



Key Insights

Amount of giving per annum by private and corporate philanthropy in Kenya



Average philanthropy investment allocation by type of organization



Top 5 Counties by number of philanthropic organizations with active programs in 2021



Philanthropy programs are carried out through three main ways;



Philanthropic assets



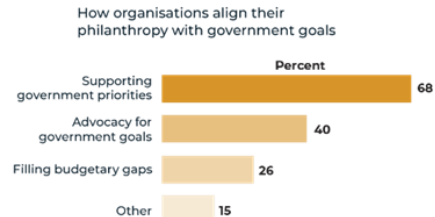
Top 5 sectors with the highest number of philanthropy activities



Organizations aligning philanthropy with SDGs



Alignment with government priorities



The foreign exchange rate used in this report is 1 US dollar to 110.3 Kenyan shillings, based on the prevailing rate as of November 1, 2021



Estimated giving by private and corporate philanthropy in Kenya

The estimated annual giving by private and corporate philanthropy in Kenya is over **KES 172 billion or \$1.56 billion USD.**

68% of 121 organisations sampled participated in philanthropic activities in 2021, while 32% of organisations did not.

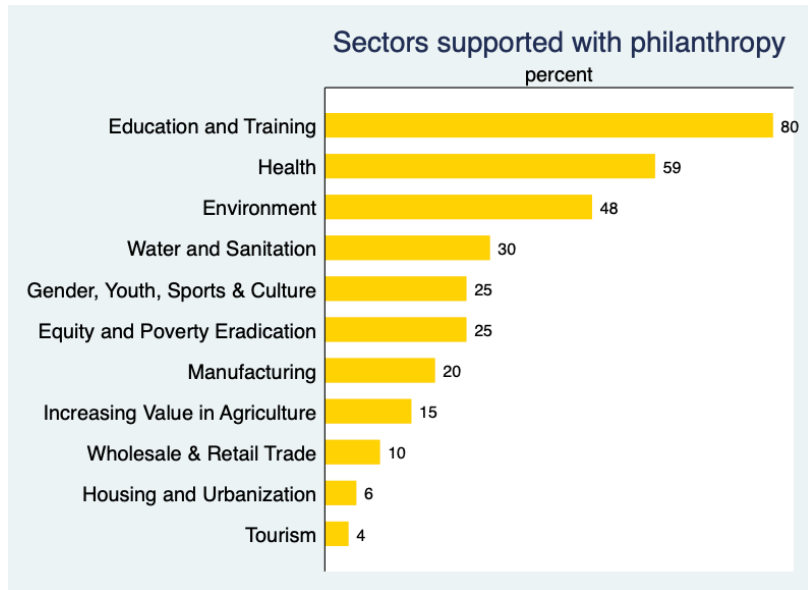
Those who were not giving include companies listed in the NSE. Opportunities exist to increase giving among medium and large publicly-listed companies.



Where are they giving

Development sectors supported by philanthropy

Education(80%), health (59%), and environment (48%) had the highest number of organisations investing in these sectors.



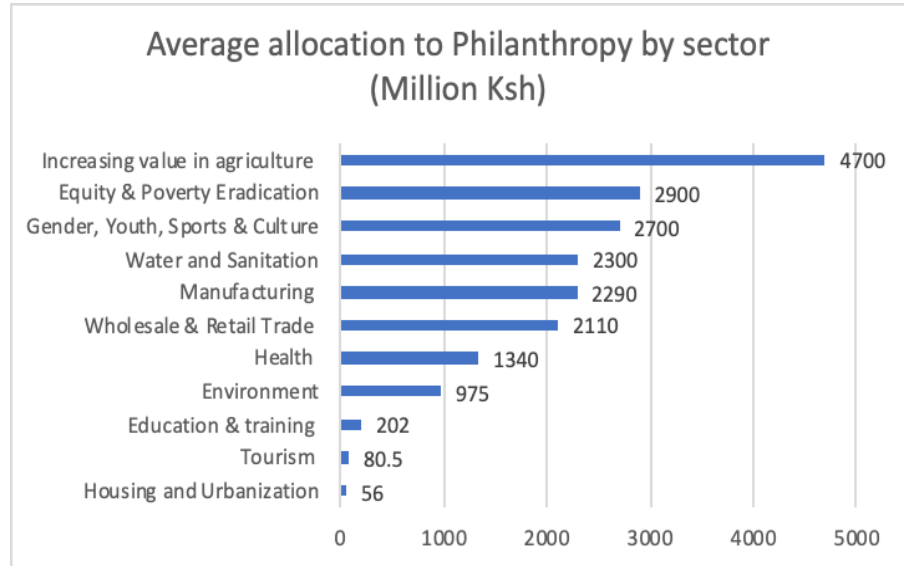
Funded sectors by number of organisations



Funding by Sector

Although the top sectors *by the number of organisations* were **education, health, and environment**.

The leading sectors *by the funding allocation* are **agriculture, equity & poverty eradication, gender/youth, and water & sanitation**.



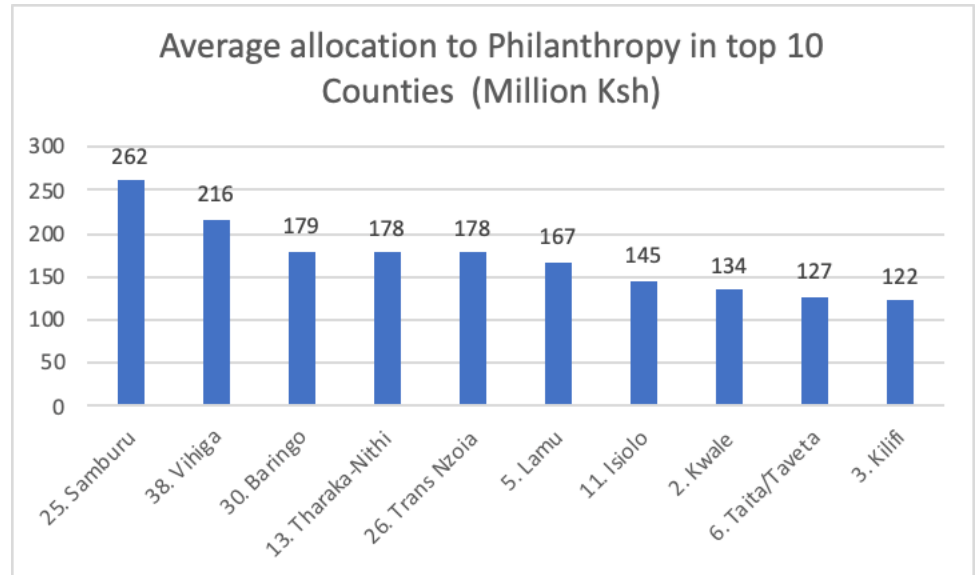
Funded sectors by investment allocation



Funding by geographic location

Top counties by allocation of funds

Notably, the top three counties in terms of funds allocated were Samburu County receiving KES 262 million, Vihiga County with KES 216 million, and Baringo County at KES 179 million.

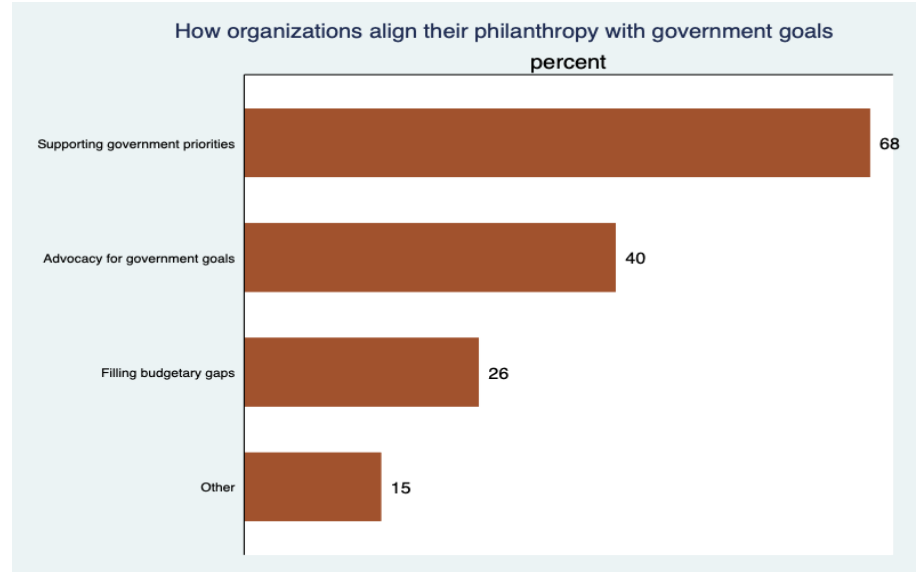


Distribution of counties by funds allocated



Alignment to National Goals

68% of the organizations interviewed aligned their philanthropy programs with government goals.



Alignment with government goals



Alignment to National Goals

Role of Philanthropy in Kenya:

- Education, health, environment, water and sanitation, and agriculture are the main sectors supported by philanthropy.
- Alignment and overlap with national goals are good for education and health, moderate for environment, water and sanitation, Youth and sports and weak for agriculture.
- In 2021 various counties faced challenges due to the Covid-19 pandemic, drought, and cholera outbreaks.
- Philanthropic sector showed versatility and mobilised resources to respond to crises.

Challenges and Opportunities:

- External shocks and funding gaps pose challenges for government development agendas.
- Opportunities for investment include improving access to post-primary education, teacher training, girls' education, and healthcare coverage.

Rural Development Opportunities:

- Focus on rural areas for interventions in education, water and sanitation, healthcare, and social protection and justice.
- Strengthen social protection and justice systems to address gender-based violence in rural areas.



Alignment to SDGs

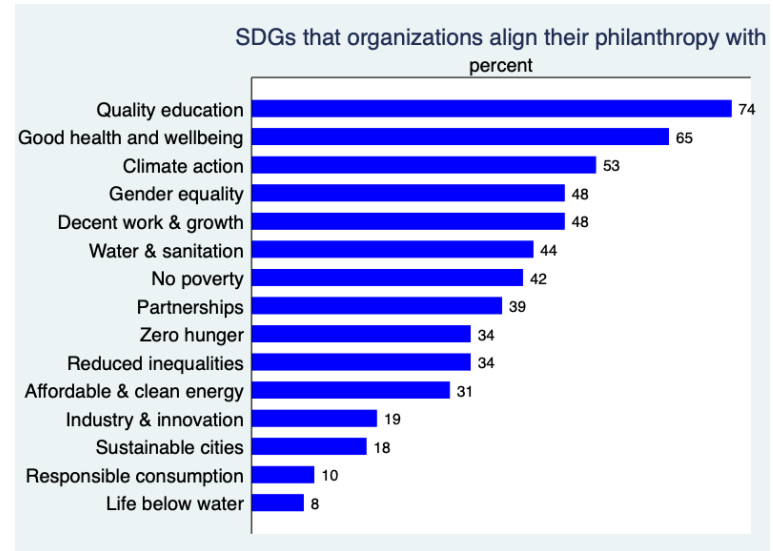
87% have already aligned their philanthropy programs with the SDGs.

Most organisations invested in

- SDG 3 (Good health and wellbeing; 65%)
- SDG 4 (Quality education; 74%)

Least-supported were

- SDG 14 (life below water; 8%)
- SDG 12 (responsible consumption and production (10%).



Alignment of philanthropy investment in the SDGs



Recommendations

Philanthropy has been instrumental in advancing Kenya's development priorities. This research aims to inform, engage, and influence philanthropic behaviour, promoting thought leadership and advocating for a conducive policy environment. The key recommendations are as follows:

1. Increase alignment with development priorities- Opportunities exist for increased investment in sectors such as education, sustainable agriculture, renewable energy, and infrastructure development.

2. Improve governance and management structures- Establish strong governance structures with clear roles and long-term plans.

3. Improve reporting and mainstreaming monitoring and evaluation (M&E)- Enhance M&E processes to gather comprehensive data and track program progress. Utilise evidence-based decision-making to identify areas for improvement.

4. Increase giving- Encourage corporations to adopt more consistent and predictable giving strategies, such as allocating a proportion of net profit to philanthropic initiatives.

5. Collaboration and joint planning - engage in joint planning with the government to enhance impact and advocate for improvements in the legal framework.

STATE OF PHILANTHROPY IN KENYA

2023 REPORT LAUNCH



Thank You